

A nighttime photograph of the Washington State Capitol building, illuminated from within. The central dome is the focal point, surrounded by classical architectural details like columns and pediments. In the foreground, several cherry blossom trees are in full bloom, their white flowers contrasting with the dark evening sky. A paved walkway leads towards the building, flanked by green lawns and some streetlights. A dark SUV and a red car are parked in the lower foreground. The overall scene is a blend of natural beauty and architectural grandeur.

# 2026 LEGISLATIVE UPDATE

Rep. Jake Fey  
27th Legislative District

# Transportation Big Picture

*A steady, realistic approach in a difficult budget year*

**This is a supplemental budget year. It updates and protects commitments already underway while responding to current pressures.**

Transportation budget:

- Keeps Washington on course by focusing on preservation and maintenance, rather than launching major new projects.
- It produces a 6-year balanced financial plan and authorizes \$800 million in bonds to help stabilize the system.
- It also recognizes a hard truth: transportation needs a structural funding fix for the future.

# Joint Transportation Committee: What Comes Next

The budget funds two important Joint Transportation Committee efforts to help guide the next phase of transportation policy.

- Financial Stability Study: a look at long-term transportation revenue, spending, and sustainability.
- "Go Forward" Work: planning for how the state should move ahead as costs rise and current funding tools become less reliable.
- Ferries Study

These studies are about being honest with the public and making sure we are prepared for the road ahead.



# Preservation & Maintenance First

- Increase highway maintenance spending by \$40 million.
- Increase bridge and highway preservation investments by \$300 million.
- Fund design, planning, and environmental review for SR 165 Fairfax Bridge replacement.
- Maintain a 6-year balanced plan without overcommitting the state to unaffordable new obligations.

# Keeping Washington Moving

- **Ferries:** terminal electrification, vessel construction incentives, dry dock feasibility, and ferry strategy work continue.
- **Rail & Freight:** free youth fares on Amtrak Cascades, Columbia River dredging, freight policy study, and truck parking feasibility work.
- **Traffic Safety:** truck safety education, tribal traffic safety grants, community-based driver training, and other crash reduction tools.

# Climate Commitment Act Funding

*Using climate dollars strategically while planning for long-term stability*

- **CCA revenue helped support transportation decarbonization and mobility investments, but it is not an unlimited or permanent answer.**
- **That is why the budget begins phasing out use of CCA dollars for some transportation programs and treats this revenue more cautiously.**
- **Where CCA dollars are used, the focus remains on cleaner transportation, pollution reduction, and community-centered investments.**



# Transportation + Environmental Wins

## Transportation:

- HB 2410: Commercial Truck Safety & Education Council - Strengthens safety training and helps prevent crashes on freight corridors and local roads.
- HB 2374 / SB 6110: Electric motorcycles and bicycles - Updates state law to better reflect how low-emission transportation options can be used safely.
- HB 1980: Employer transportation services at transit facilities - Helps reduce congestion and improve commuting options by making better use of existing transit infrastructure.
- Climate Commitment Act investments - Support cleaner transportation, EV infrastructure, transit access, and community-based pollution reduction.

## Environmental:

- ESB 6246 – Carbon-intensive trade-exposed facilities under CCA
- HB 1903 – Statewide assistance program
- SB 6355 – Improving ability and capacity for the electric transmission system

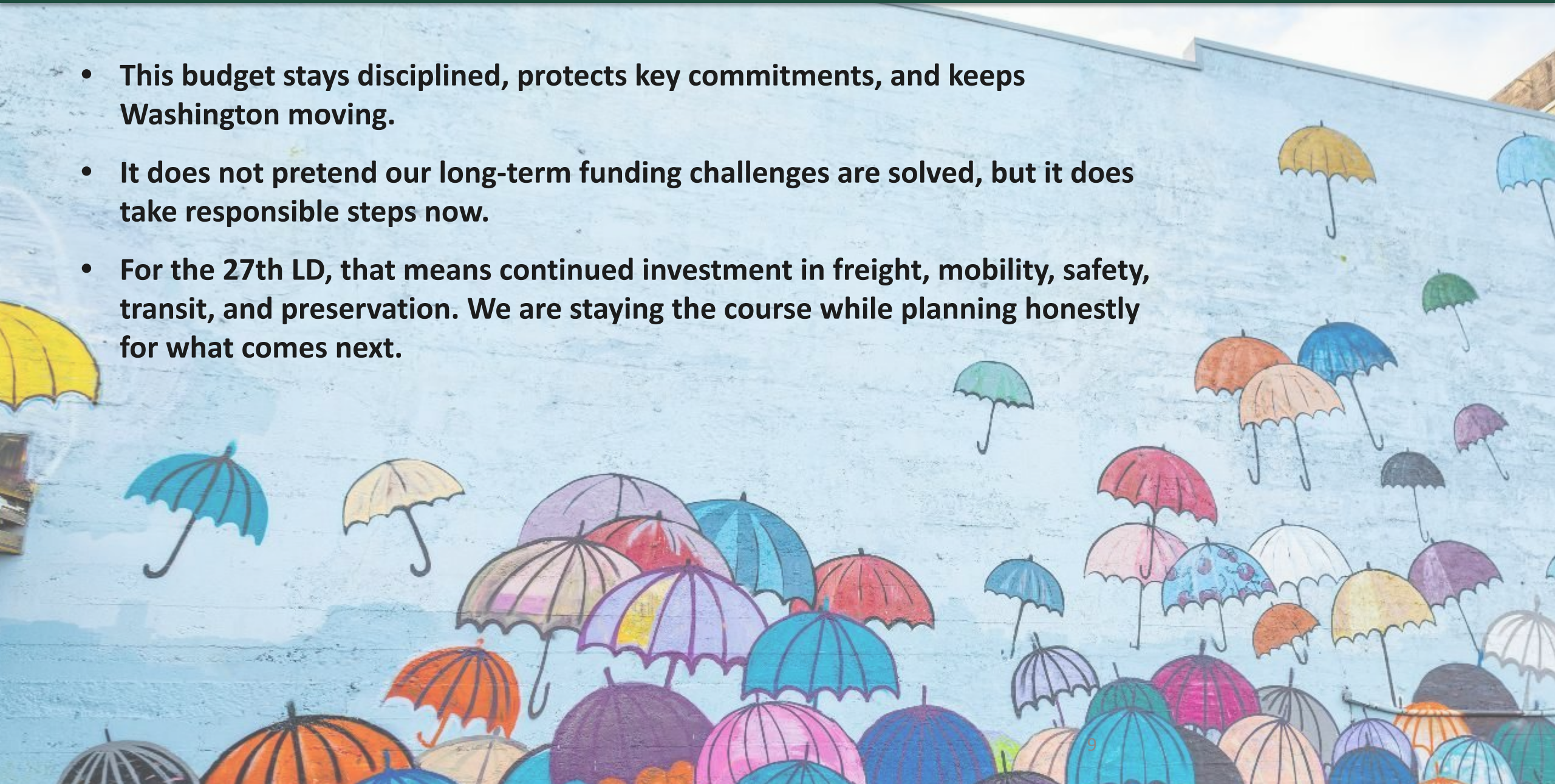
# Safety Win: Commercial Truck Education

- **HB 2410 creates the Commercial Truck Safety and Education Council.**
- **It brings together labor, industry, and public partners to help shape training investments and safety priorities.**
- **The goal is simple: prevent crashes, improve safety culture, and better protect people and infrastructure.**



# Bottom Line

- **This budget stays disciplined, protects key commitments, and keeps Washington moving.**
- **It does not pretend our long-term funding challenges are solved, but it does take responsible steps now.**
- **For the 27th LD, that means continued investment in freight, mobility, safety, transit, and preservation. We are staying the course while planning honestly for what comes next.**



# Questions?

# Contact Us:

**Senator Yasmin Trudeau**

(360) 786-7652

[Yasmin.Trudeau@leg.wa.gov](mailto:Yasmin.Trudeau@leg.wa.gov)

**Speaker Laurie Jinkins**

(360) 786-7930

[Laurie.Jinkins@leg.wa.gov](mailto:Laurie.Jinkins@leg.wa.gov)

**Representative Jake Fey**

(360) 786-7974 or (253) 650-0916

[Jake.Fey@leg.wa.gov](mailto:Jake.Fey@leg.wa.gov)

